

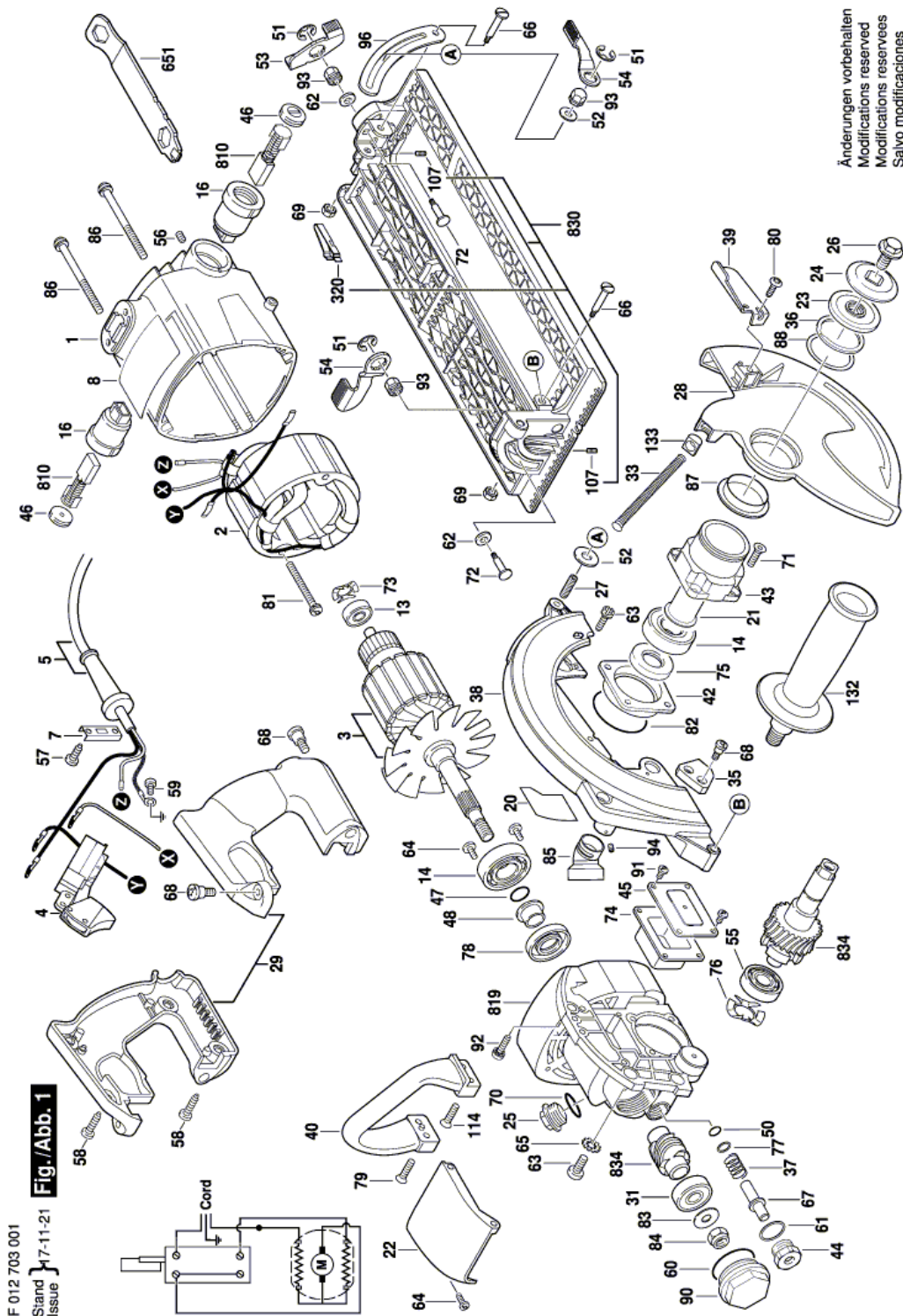
Circular saw - F 012 703 001 - SPT70V

Item	Part Number	Description	Illustration	Price	Quantity	Price Group
1	1 609 730 364	Motor Housing	1	-,-	1	-
2	1 609 730 375	Field	1	-,-	1	-
3	1 609 730 369	Armature	1	-,-	1	-
4	1 607 200 334	Switch	1	\$ 8.70	1	23
5	1 609 730 368	Power supply cord	1	-,-	1	-
7	1 619 X01 274	Cable Clip	1	\$ 1.12	1	11
8	1 609 730 365	Nameplate	1	-,-	1	-
13	2 610 017 348	groove ball bearing	1	\$ 2.01	1	14
14	2 610 024 748	Ball Bearing	1	\$ 2.58	2	15
16	1 619 X04 708	Brush Holder	1	\$ 2.58	2	15
20	1 609 730 378	Warning Label	1	-,-	1	-
21	1 609 730 352	Bushing	1	-,-	1	-
22	1 619 X01 208	Hood	1	\$ 1.12	1	11
23	1 609 730 359	Set Of Clutch Plates	1	-,-	1	-
24	1 609 730 366	Set Of Clutch Plates	1	-,-	1	-
25	1 619 X06 474	Oil Drain Plug	1	\$ 1.70	1	13
26	1 619 X03 643	Collar bolt	1	\$ 1.36	1	12
27	1 619 X01 262	Stud	1	\$ 1.12	1	11
28	1 609 730 363	Lower guard	1	-,-	1	-
29	1 609 730 360	Handle	1	-,-	1	-
31	2 610 017 875	Ball Bearing	1	\$ 2.94	1	16
33	1 609 730 376	Extension Spring	1	-,-	1	-
35	1 609 730 370	Rubber stop	1	-,-	1	-
36	1 609 730 354	Retaining ring	1	-,-	1	-
37	2 610 023 394	Spring	1	\$ 0.68	1	10
38	1 609 730 377	Upper guard	1	-,-	1	-
39	1 609 730 357	Lever	1	-,-	1	-
40	1 609 730 349	Handle	1	-,-	1	-
42	1 619 X01 253	Bearing Plate	1	\$ 4.31	1	18
43	1 609 730 350	Gear Cover	1	-,-	1	-
44	1 619 X01 271	Bushing	1	\$ 1.70	1	13
45	1 619 X04 783	Cover	1	\$ 1.70	1	13

Item	Part Number	Description	Illustration	Price	Quantity	Price Group
46	1 619 X01 268	Device cap	1	\$ 1.12	2	11
47	1 619 X04 712	O-Ring	1	\$ 0.68	1	10
48	1 619 X01 272	Collar	1	\$ 2.01	1	14
50	1 619 X03 779	O-Ring	1	\$ 1.12	1	11
51	2 610 968 747	Spring retaining ring	1	\$ 1.12	3	11
52	2 610 912 616	Washer	1	\$ 0.68	2	10
53	1 609 730 361	Locking Lever	1	-,-	1	-
54	1 609 730 362	Locking Lever	1	-,-	2	-
55	2 610 000 166	Ball Bearing	1	\$ 2.94	1	16
56	2 610 027 039	Set screw	1	\$ 0.68	2	10
57	2 610 315 299	Screw	1	\$ 0.68	2	10
58	2 610 315 380	Screw	1	\$ 0.68	5	10
59	1 619 X03 644	Screw	1	\$ 0.68	1	10
60	1 619 X06 222	O-Ring	1	\$ 0.68	1	10
61	2 610 025 067	Washer	1	\$ 1.12	1	11
62	1 619 X03 110	Washer	1	\$ 1.12	2	11
63	2 610 329 955	Screw	1	\$ 0.68	3	10
64	1 619 X01 786	Contact Screw	1	\$ 0.68	4	10
65	2 610 306 355	Washer	1	\$ 0.68	2	10
66	1 609 730 373	Shoulder Screw	1	-,-	2	-
67	1 619 X01 298	Bearing bolt	1	\$ 1.12	1	11
68	2 610 932 332	Screw	1	\$ 0.68	6	10
69	1 619 X09 155	Lock Nut	1	\$ 0.68	2	10
70	1 616 B10 364	O-Ring	1	\$ 0.68	1	10
71	2 610 027 002	Screw	1	\$ 0.68	4	10
72	1 609 730 351	Bolt	1	-,-	2	-
73	2 610 004 459	Spring Washer	1	\$ 1.12	1	11
74	1 619 X01 257	Rubber Gasket	1	\$ 1.12	1	11
75	1 619 X07 731	Seal	1	\$ 2.58	1	15
76	2 610 931 237	Spring Washer	1	\$ 1.12	1	11
77	2 610 017 015	Filter	1	-,-	1	-
78	1 619 X04 740	Seal	1	\$ 4.31	1	18
79	2 610 993 549	Screw	1	\$ 0.68	2	10
80	1 619 X06 749	Screw	1	\$ 0.68	1	10
81	1 609 730 371	Screw	1	-,-	2	-
82	1 600 210 070	O-Ring	1	\$ 0.68	1	10
83	1 619 X05 847	Washer	1	\$ 0.68	1	10
84	2 610 318 324	Nut	1	\$ 1.12	1	11
85	1 609 730 356	Elbow	1	-,-	1	-
86	2 610 329 954	Screw	1	\$ 2.58	4	15
87	1 609 730 353	Bushing	1	-,-	1	-
88	1 609 730 367	Washer	1	-,-	1	-
90	1 619 X01 260	Bearing Cover	1	\$ 1.12	1	11
91	1 619 X06 749	Screw	1	\$ 0.68	4	10
92	2 610 932 218	Screw	1	\$ 0.68	1	10
93	1 619 X01 283	Nut	1	\$ 1.70	3	13
94	1 609 730 358	Set screw	1	-,-	1	-
96	1 609 730 355	Hinge Bracket	1	-,-	1	-
107	1 609 730 372	Set screw	1	-,-	2	-
114	2 610 911 890	Screw	1	\$ 0.68	2	10

Item	Part Number	Description	Illustration	Price	Quantity	Price Group
132	1 619 X09 133	Handle	1	\$ 4.31	1	18
133	1 609 730 374	Bushing	1	-,-	1	-
320	1 619 X04 669	Spring	1	\$ 0.68	1	10
651	1 619 X04 755	Wrench Socket	1	\$ 2.94	1	16
810	1 619 X09 587	Brush-Spring Set	1	\$ 4.31	1	18
819	1 609 730 380	Gear Housing	1	-,-	1	-
830	1 609 730 379	Base Plate	1	-,-	1	-
834	1 609 730 381	Set Of Gears	1	-,-	1	-

Illustration - Type E



Änderungen vorbehalten
 Modifications reserved
 Modificaciones reservadas
 Salvo modificaciones

Information subject to change without further notice.