

DL SERIES DYNALIFT®

GEHL Telescopic Handlers





Get It All!

HIGH LIFT. LONG REACH. BIG LOAD CAPACITY.

Now you can have everything you ever wanted in a telescopic handler with the Gehl DL Series. Tried and true reliability with a new updated design. Performance you can count on with unmatched versatility, visibility and comfort. Great tool carrier flexibility make it the one "can-do" machine that you won't be able to do without.





GEHL

Gehl is changing the way the world looks at telescopic handlers with their DL Series Dynalift® models. Deluxe features and unmatched versatility is what it's all about. With a full line of easy-to-attach tools, you can lift in the morning, load in the afternoon and backfill in the evening. Equipped with the patented Gehl Personnel Work Platform (PWP) System, it can even be used as a personnel lift.

- Side-mount engine design for easy maintenance access
- Hydraulic frame leveling
- Pilot assist multi-function joystick
- Automatic rear axle stabilization
- Tight turning radius
- Spacious, ergonomically designed operator station
- Exclusive Select-A-Boom™ System
- Personnel Work Platform System*
- Standard 115 hp turbo charged engine

* Optional as of May, 2005



DL Series Specs AT A GLANCE

Model No.	Max. Lift Capacity @ Max. Lift Height (kg)	Max. Lift Height (m)
DL-6	7,000 lbs. (3175)	42 ft. (12.6)
DL-8	8,000 lbs. (3628)	42 ft. (12.6)
DL-10	5,500 lbs. (2500)	55 ft. (16.5)
DL-12	10,000 lbs. (4535)	40 ft. (12.1)

**MORE POWER, MORE VERSATILITY,
MORE SOLUTIONS**

Features & Benefits



- To increase stability and operator confidence on steep or uneven terrain, the Dynalift frame tilts 10° to the left or right.



- Operator visibility and work site safety are enhanced due to the side-mounted engine and upright rear boom mounts.

GEHL

Towering lift. Long reach. Excellent load capacities. The list goes on. The DL Series Dynalift Telescopic Handlers will help you find new ways to increase job site productivity, develop new business and provide a quick return on investment.

- Industry-leading turning radius of 12'2" offers excellent maneuverability in confined spaces. Low-profile design allows it to easily pass under 8' doorways.
- All Dynalift Telescopic Handlers have 4-wheel, 2-wheel and 4-wheel crab-type steering.



EXCLUSIVE SELECT-A-BOOM™ SYSTEM

Choose the boom profile best suited to your operation with the **exclusive** Gehl Select-A-Boom System™. Designed to give you the precise handling, lift capacity and height your work demands.

- Maximum load capacities range from 7,000 to 12,000 pounds
- Choice of low or high boom profiles
- Boom length options with maximum lifts of 40', 42', 44' and 55'
- Choice of lift- or loader-oriented tools



- Routine service is fast and easy thanks to access doors for the engine, drive train, electrical and hydraulic systems.



OPERATOR FRIENDLY INTERIOR

- Spacious cab with 57 cubic feet of interior space
- Ergonomically designed with easy-to-reach controls and 5 position tilt-steering
- Pilot-operated joystick allows operators precise movement of heavy loads
- Lockable, two-piece door can be partially opened for air circulation
- Heating and defrosting systems are standard (air conditioning is optional)
- 360° view increases work site safety and operator productivity



- The DL Series combines large lift capacities with high lift heights, even without the use of outriggers or tire ballast.

- Large cabs provide clear sight lines.

- Lockable storage compartment, sealed against the elements, works well for tools, lunch box and extra clothes.

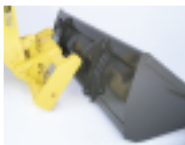


Dual Function Joystick



Tri-Function Joystick

- Single joystick controller is available as a dual function or tri-function option. Dual function joystick allows proportional control of attachments and auxiliary hydraulics. Tri-function joystick features electro-hydraulic, 2-speed control of attachments and auxiliary hydraulics.



Dynacrier®



Dynattach®

- Dynacrier® quick-attach system is designed for bucket and other high force applications.
- Dynattach® quick-attach system allows quick attachment changes with unsurpassed ease.

DIMENSIONS, MEASURES & WEIGHTS

Overall Length – less forks (m)	20'1" (6.1)	/	19'10" (6.0)	20'10" (6.25)	/	20'7" (6.2)
Overall Height (m)	7'10" (2.4)	/	7'10" (2.4)	7'10" (2.4)	/	7'10" (2.4)
Overall Width (m)	8'1" (2.4)	/	8'1" (2.4)	8'1" (2.4)	/	8'1" (2.4)
Ground Clearance (mm)	16" (400)	/	16" (400)	16" (400)	/	16" (400)
Outside Turning Radius (m)	12'2" (3.7)	/	12'2" (3.7)	12'2" (3.7)	/	12'2" (3.7)
Wheel Base (m)	10'8" (3.3)	/	10'8" (3.3)	10'8" (3.3)	/	10'8" (3.3)
Fuel Capacity (L)	30 gal. (113.5)	/	30 gal. (113.5)	30 gal. (113.5)	/	30 gal. (113.5)
Hydraulic Oil Reservoir Capacity (L)	45 gal. (170.3)	/	45 gal. (170.3)	45 gal. (170.3)	/	45 gal. (170.3)
Operating Weight (kg)	23,100 lbs. (10477)	/	23,100 lbs. (10477)	23,250 lbs. (10545)	/	23,250 lbs. (10545)

LIFT PERFORMANCE

Rated Lift Capacity (kg)	7,000 lbs. (3175)	/	7,000 lbs. (3175)	7,000 lbs. (3175)	/	7,000 lbs. (3175)
Boom Length	42'			44'		
Maximum Lift Height (m)	41'9" (12.5)	/	42'3" (12.7)	44' (13.2)	/	44'3" (13.3)
Max. Lift Capacity @ Max. Lift Ht. (kg)	7,000 lbs. (3175)	/	7,000 lbs. (3175)	6,000 lbs. (2721)	/	6,000 lbs. (2721)
Maximum Forward Reach (m)	27'4" (8.2)	/	28'6" (8.6)	29'6" (8.9)	/	30'6" (9.2)
Max. Lift Capacity @ Max. Fwd. Reach (kg)	1,500 lbs. (680)	/	1,500 lbs. (680)	1,000 lbs. (454)	/	1,000 lbs. (454)

LOADER PERFORMANCE

Gross Power (kW)	115 hp (86) @ 2500 rpm			115 hp (86) @ 2500 rpm		
Breakout Force (kN)	11,000 lbf (48.9)	/	11,000 lbf (48.9)	11,000 lbf (48.9)	/	11,000 lbf (48.9)
Maximum Dump Height (m)	40'3" (12.3)	/	40'3" (12.3)	42'5" (12.7)	/	42'11" (12.9)
Max. Forward Reach @ 45° Dump Angle (mm)	2'2" (650)	/	1'8" (500)	2'9" (825)	/	2'3" (675)
Dump Angle @ Max. Dump Height	23°	/	24°	23°	/	24°
Maximum Loadover Height (m)	41'8" (12.5)	/	42'2" (12.7)	43'11" (13.2)	/	44'2" (13.3)
Max. Dump Height @ 45° Dump Angle (m)	31'3" (9.5)	/	32'4" (9.7)	33' (9.9)	/	34' (10.2)
Max. Forward Reach @ Max. Dump Ht. (m)	13'8" (4.1)	/	13' (3.9)	15' (4.5)	/	14'3" (4.3)
Rollback @ Ground Level	30°			30°		
Total Degrees of Bucket Rotation	132°			132°		
Lift Action	Parallel			Parallel		

SPECIFICATIONS

Components

Engine (kg)	John Deere Turbo Diesel	John Deere Turbo Diesel
Transmission	4-Speed / Power-Shift	4-Speed / Power-Shift
Drive Type	4-Wheel / Full-Time	4-Wheel / Full-Time
Steering		
2-Wheel	Standard	Standard
4-Wheel	Standard	Standard
Crab	Standard	Standard
Service Brakes	4-Wheel / Multi-Disc	4-Wheel / Multi-Disc
Parking Brake	Spring-Applied, Hydraulic Release	Spring-Applied, Hydraulic Release

SPECIAL FEATURES

Boom Mount	Low or High	Low or High
Single Joystick Controller	Dual or Tri-function	Dual or Tri-function
Air Filter Pre-Cleaner	Standard	Standard
Fenders	Standard	Standard
Frame Leveling	Standard	Standard
Lockable Storage Compartment	Standard	Standard
Tilt Steering Column	Standard	Standard
Transmission Cut-Out	Standard	Standard
Air Conditioning	Option	Option
Auxiliary Hydraulics	Option	Option
Cold Weather Start Aid	Option	Option
Dynacarryer® Mount	Option	Option
Dynatatch® Mount	Option	Option
Enclosed Cab w/Heater, Defroster	Option	Option
Outriggers	Option	Option
PWP System	Option*	Option*
Suspension Seat	Option	Option
Worklight Package	Option	Option

8L/8H (42 Foot Boom)

20'1" (6.1)	/	19'10" (6.0)
7'10" (2.4)	/	7'10" (2.4)
8'3" (2.5)	/	8'3" (2.5)
16" (400)	/	16" (400)
12'2" (3.7)	/	12'2" (3.7)
10'8" (3.3)	/	10'8" (3.3)
30 gal. (113.5)	/	30 gal. (113.5)
45 gal. (170.3)	/	45 gal. (170.3)
24,500 lbs. (11112)	/	24,500 lbs. (11112)

8,000 lbs. (3628)	/	8,000 lbs. (3628)
42"		
41'9" (12.5)	/	42'3" (12.7)
8,000 lbs. (3628)	/	8,000 lbs. (3628)
27'4" (8.2)	/	28'6" (8.5)
2,000 lbs. (907)	/	2,000 lbs. (907)

115 hp (86) @ 2500 rpm		
12,500 lbf (55.6)	/	12,500 lbf (55.6)
40'3" (12.1)	/	40'11" (12.3)
2'2" (660)	/	1'8" (508)
23°	/	24°
41'8" (12.5)	/	42'2" (12.6)
31'3" (9.5)	/	32'4" (9.7)
13'8" (4.1)	/	13' (3.9)
30°		
132°		
Parallel		

John Deere Turbo Diesel

4-Speed / Power-Shift
4-Wheel / Full-Time

Standard
Standard
Standard
4-Wheel / Multi-Disc
Spring-Applied, Hydraulic Release

Low or High

Dual or Tri-function

Standard
Standard
Standard
Standard
Standard
Standard
Option
Option
Option
Option
Option
Option
Option
Option
Option
Option

8L/8H (44 Foot Boom)

20'10" (6.25)	/	20'7" (6.2)
7'10" (2.4)	/	7'10" (2.4)
8'3" (2.5)	/	8'3" (2.5)
16" (400)	/	16" (400)
12'2" (3.7)	/	12'2" (3.7)
10'8" (3.3)	/	10'8" (3.3)
30 gal. (113.5)	/	30 gal. (113.5)
45 gal. (170.3)	/	45 gal. (170.3)
24,650 lbs. (11180)	/	24,650 lbs. (11180)

8,000 lbs. (3628)	/	8,000 lbs. (3628)
44"		
44' (13.2)	/	44'4" (13.2)
7,000 lbs. (3175)	/	7,000 lbs. (3175)
29'6" (8.6)	/	30'6" (9.2)
1,500 lbs. (680)	/	1,500 lbs. (680)

115 hp (86) @ 2500 rpm		
12,500 lbf (55.6)	/	12,500 lbf (55.6)
42'5" (12.7)	/	42'11" (12.9)
2'9" (838)	/	2'3" (686)
23"	/	24"
43'11" (13.2)	/	44'2" (13.3)
33' (9.9)	/	34' (10.2)
15' (4.5)	/	14'3" (4.3)
30"		
132"		
Parallel		

John Deere Turbo Diesel

4-Speed / Power-Shift
4-Wheel / Full-Time

Standard
Standard
Standard
4-Wheel / Multi-Disc
Spring-Applied, Hydraulic Release

Low or High

Dual or Tri-function

Standard
Standard
Standard
Standard
Standard
Standard
Option
Option
Option
Option
Option
Option
Option
Option
Option
Option

GENERAL DIMENSIONS

Based on standard machine equipped with listed tires, 48" (1.2m) masonry carriage and 48" (1.2m) pallet forks.

Recommended tire type:

DL-6, DL-8: 13.00x24 G2 12 ply
DL-10, DL-12: 14.00x24 G2 12 ply

SAFETY IS NO ACCIDENT.

Gehl Company reminds users to read and understand the operator's manual before operating any piece of equipment. Additionally, be sure all safety devices and shields are securely in place and functioning properly.

Gehl reserves the right to make changes in specifications shown or add improvements at any time without notice or obligation.

GEHL



- A tight 12'2" turning radius offers unsurpassed maneuverability.

DIMENSIONS, MEASURES & WEIGHTS

Overall Length – less forks (m)	20'10" (6.25)	/	20'7" (6.2)	21'2" (6.35)	/	21'2" (6.35)
Overall Height (m)	7'11" (2.4)	/	7'11" (2.4)	7'11" (2.4)	/	7'11" (2.4)
Overall Width (m)	8'3" (2.5)	/	8'3" (2.5)	8'3" (2.5)	/	8'3" (2.5)
Ground Clearance (mm)	16" (400)	/	16" (400)	16" (400)	/	16" (400)
Outside Turning Radius (m)	12'2" (3.7)	/	12'2" (3.7)	12'2" (3.7)	/	12'2" (3.7)
Wheel Base (m)	10'8" (3.3)	/	10'8" (3.3)	10'8" (3.3)	/	10'8" (3.3)
Fuel Capacity (L)	30 gal. (113.5)	/	30 gal. (113.5)	30 gal. (113.5)	/	30 gal. (113.5)
Hydraulic Oil Reservoir Capacity (L)	45 gal. (170.3)	/	45 gal. (170.3)	45 gal. (170.3)	/	45 gal. (170.3)
Operating Weight (kg)	25,400 lbs. (11520)	/	25,400 lbs. (11520)	28,460 lbs. (12936)	/	28,460 lbs. (12936)

LIFT PERFORMANCE

Rated Lift Capacity (kg)	10,000 lbs. (4535)	/	10,000 lbs. (4535)	10,000 lbs. (4535)	/	10,000 lbs. (4535)
Boom Length	44'			55'		
Maximum Lift Height (m)	44' (13.2)	/	44'4" (13.3)	55'1" (16.5)	/	55' (16.5)
Max. Lift Capacity @ Max. Lift Ht (kg)	8,000 lbs. (3628)	/	8,000 lbs. (3628)	5,500 lbs. (2500)	/	5,500 lbs. (2500)†
Maximum Forward Reach (m)	29'6" (8.9)	/	30'6" (9.2)	40'9" (12.23)	/	40'9" (12.23)
Max. Lift Capacity @ Max. Fwd. Reach (kg)	2,000 lbs (907)	/	2,000 lbs. (907)	2,000 lbs. (907)	/	2,000 lbs. (907)

LOADER PERFORMANCE

Gross Power (kW)	115 hp (86) @ 2500 rpm			NA	/	NA
Breakout Force (kN)	14,000 lbf (62.2)	/	14,000 lbf (62.2)	NA	/	NA
Maximum Dump Height (m)	42'5" (12.7)	/	42'11" (12.9)	NA	/	NA
Max. Forward Reach @ 45° Dump Angle (mm)	2'9" (838)	/	2'3" (686)	NA	/	NA
Dump Angle @ Max. Dump Height	23°	/	24°	NA	/	NA
Maximum Loadover Height (m)	43'11" (13.2)	/	44'2" (13.3)	NA	/	NA
Max. Dump Height @ 45° Dump Angle (m)	33' (9.9)	/	34' (10.2)	NA	/	NA
Max. Forward Reach @ Max. Dump Ht. (m)	15' (4.5)	/	14'3" (4.3)	NA	/	NA
Rollback @ Ground Level	30°			NA	/	NA
Total Degrees of Bucket Rotation	132°			NA	/	NA
Lift Action	Parallel			Parallel		

SPECIFICATIONS

Components

Engine (kg)	John Deere Turbo Diesel	John Deere Turbo Diesel
Transmission	4-Speed / Power-Shift	4-Speed / Power-Shift
Drive Type	4-Wheel / Full-Time	4-Wheel / Full-Time
Steering		
2-Wheel	Standard	Standard
4-Wheel	Standard	Standard
Crab	Standard	Standard
Service Brakes	4-Wheel / Multi-Disc	4-Wheel / Multi-Disc
Parking Brake	Spring-Applied, Hydraulic Release	Spring-Applied, Hydraulic Release

SPECIAL FEATURES

Boom Mount	Low or High	Low or High
Single Joystick Controller	Dual or Tri-function	Dual or Tri-function
Air Filter Pre-Cleaner	Standard	Standard
Fenders	Standard	Standard
Frame Leveling	Standard	Standard
Lockable Storage Compartment	Standard	Standard
Tilt Steering Column	Standard	Standard
Transmission Cut-Out	Standard	Standard
Air Conditioning	Option	Option
Auxiliary Hydraulics	Option	Option
Cold Weather Start Aid	Option	Option
Dynacarryer® Mount	Option	Option
Dynatatch® Mount	Option	Option
Enclosed Cab w/Heater, Defroster	Option	Option
Outriggers	Option	Option
PWP System	Option*	Option*
Suspension Seat	Option	Option
Worklight Package	Option	Option

* After May, 2005

† With outriggers down

12H (40 Foot Boom)

19'4" (5.8)
7'11" (2.4)
8'3" (2.5)
16" (400)
12'2" (3.7)
10'8" (3.3)
30 gal. (113.5)
45 gal. (170.3)
25,300 lbs. (11500)

12,000 lbs. (5454)
40'
40'4" (12.1)
10,000 lbs. (4535)
26'4" (7.9)
2,000 lbs. (907)

115 hp (86) @ 2500 rpm
14,000 lbf (62.2)
39' (11.7)
14" (356)
24"
40'3" (12.1)
30'9" (9.2)
11'10" (3.6)
30"
132"
Parallel

John Deere Turbo Diesel

4-Speed / Power-Shift

4-Wheel / Full-Time

Standard

Standard

Standard

4-Wheel / Multi-Disc

Spring-Applied, Hydraulic Release

High

Dual or Tri-function

Standard

Standard

Standard

Standard

Standard

Standard

Option

Option

Option

Option

Option

Option

Option*

Option

Option

GENERAL DIMENSIONS

Based on standard machine equipped with listed tires,
48" (1.2m) masonry carriage and 48" (1.2m) pallet forks.

Recommended tire type:

DL-6, DL-8: 13.00x24 G2 12 ply; DL-10, DL-12: 14.00x24 G2 12 ply



SAVE BIG WITH GEHL FINANCE

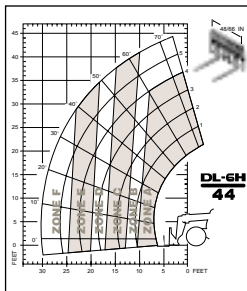
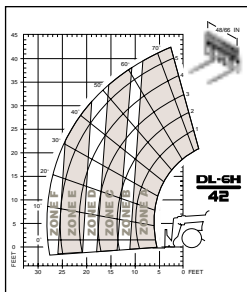
Low rates...quick approval...terms you'll like... With Gehl Finance your equipment purchase couldn't be easier or more affordable. Choose from a number of flexible payment options. See your Gehl dealer for details.

PROTECT YOUR INVESTMENT WITH THE POWER PROTECTION PLANSM OFFERED BY GEHL

Eliminate unexpected repair costs and take better care of your Gehl equipment with the Power Protection PlanSM offered by Gehl. It ensures repairs will be made quickly with genuine manufacturer-approved parts by trained mechanics. See your Gehl dealer for affordable coverage options.

GEHL

Load Charts

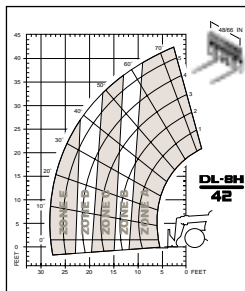


LOAD
ZONE / MAX. LIFT CAPACITY

DL-6H

44 FT. BOOM

- A 7,000 lbs.
- B 6,000 lbs.
- C 4,000 lbs.
- D 3,000 lbs.
- E 2,000 lbs.
- F 1,000 lbs.

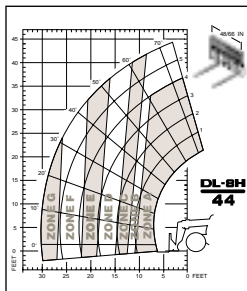


LOAD
ZONE / MAX. LIFT CAPACITY

DL-8H

42 FT. BOOM

- A 8,000 lbs.
- B 6,000 lbs.
- C 4,000 lbs.
- D 3,000 lbs.
- E 2,000 lbs.



LOAD
ZONE / MAX. LIFT CAPACITY

DL-8H

44 FT. BOOM

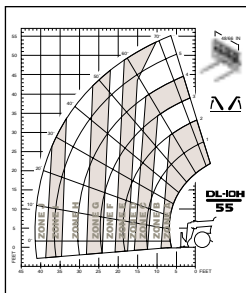
- A 8,000 lbs.
- B 7,000 lbs.
- C 6,000 lbs.
- D 4,000 lbs.
- E 3,000 lbs.
- F 2,000 lbs.
- G 1,500 lbs.

LOAD
ZONE / MAX. LIFT CAPACITY

DL-6H

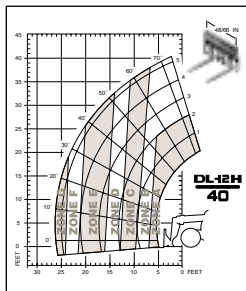
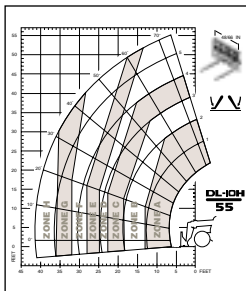
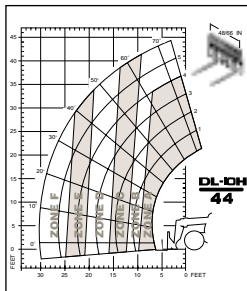
42 FT. BOOM

A	7,000 lbs.
B	6,000 lbs.
C	4,000 lbs.
D	3,000 lbs.
E	2,000 lbs.
F	1,500 lbs.



- Charts based on a 24" (600mm) load center per ANSI B56.6 - 2002
- Load chart capacities shown using 48/66 inch carriage
- Capacities vary depending on attachment used
- Only high profile load charts shown. Low profile load charts will vary slightly, and may be viewed at www.gehl.com.

GEHL



LOAD
ZONE / MAX. LIFT CAPACITY

DL-10H

44 FT. BOOM

A	10,000 lbs.
B	8,000 lbs.
C	6,000 lbs.
D	4,000 lbs.
E	3,000 lbs.
F	2,000 lbs.

LOAD
ZONE / MAX. LIFT CAPACITY

DL-10H 55 FT. BOOM

WITH OUTRIGGERS UP / DOWN

A	10,000 lbs. / 10,000 lbs.
B	8,000 lbs. / 8,000 lbs.
C	6,000 lbs. / 6,000 lbs.
D	5,000 lbs. / 5,500 lbs.
E	4,000 lbs. / 5,000 lbs.
F	3,000 lbs. / 4,000 lbs.
G	2,000 lbs. / 3,000 lbs.
H	1,000 lbs. / 2,000 lbs.
I	500 lbs. / NA
J	250 lbs. / NA

LOAD
ZONE / MAX. LIFT CAPACITY

DL-12H

40 FT. BOOM

A	12,000 lbs.
B	10,000 lbs.
C	8,000 lbs.
D	6,000 lbs.
E	4,000 lbs.
F	3,000 lbs.
G	2,000 lbs.

The PWP System allows workers to be safely elevated up to 55 feet!



Attachment Options

Gehl DL Series Dynalift® Telescopic Handlers give you the power and maneuverability needed to efficiently handle attachments. With a choice of augers, buckets, carriages, forks, a hydraulic winch or truss boom, you have the options necessary for every application. Just what you've come to expect from Gehl.

PERSONNEL WORK PLATFORM (PWP) SYSTEM

The exclusive patented Gehl Personnel Work Platform System option provides a new level of versatility and safety for crews that use the DL Series Dynalift Telescopic Handler. It makes jobs almost as easy as working at ground level, increasing profitability by adding efficiency to elevated tasks.

- Easy elevation to work areas means no more ladders and scaffolds
- Position personnel with precision
- Remote shutdown switch gives workers an extra level of protection

GEHL

COMPACT EQUIPMENT FOR BIG RESULTS™

www.gehl.com

143 Water Street • West Bend, WI 53095 • U.S.A.
Tel: 262-334-9461 • Fax: 262-338-7517

For more information on Gehl equipment, call our literature hotline at: **800-628-0491**



- Extend the forward reach of your unit with the truss boom (place roof trusses up to four stories).



- Turn your Dynalift Telescopic Handler into a loader with a bucket, available in 1.3 cubic yard, 2.0 cubic yard, and 2.5 cubic yard sizes.



- Masonry carriage efficiently handles and places blocks and other materials.
- For stacking scaffolds, unloading trucks and placing iron beams, nothing beats the rotating carriage. It allows the operator to match the carriage side tilt to the angle of the unloading surface while maintaining a level machine stance.