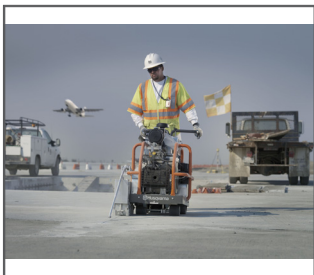




Husqvarna Soff-Cut 2000

A self-propelled dry-cutting gas saw ideal for medium to heavy-duty commercial, industrial and paving applications. The Husqvarna 2000 is designed for versatility, ease of use and high production capabilities. Three blade widths can be used, allowing for different joint widths and crack control simultaneously. Features include a 9 hp engine with automatic compression release for easy starting, chain driven overhead cam system, superior cooling, excellent lubrication system, and a cyclone air cleaner to increase engine longevity.



SOFF-CUT™ TECHNOLOGY

Husqvarna Soff-Cut is a unique patented system for early entry concrete sawing. This technology enables concrete to be cut within the first one or two hours of finishing and before final set. Husqvarna Soff-Cut™ provides the best solution for minimising the risk of random cracking, and it simplifies the working process, compared to conventional sawing.

Features Husqvarna Soff-Cut 2000

- Self-propelled petrol saw with electric start engine and hydrostatic transmission.
- Electronic remote key start and choke.
- Low-noise and low-dust blade block enclosure.
- Built-in lifting system.
- Mechanical remote retractable guide.
- Roll cage frame.
- Mechanical depth control.
- Cyclonic air filter to increase engine longevity.
- Non-stick low-density polyurethane wheels.

TECHNICAL DATA	
Motor manufacturer	Robin
Motor spec	EX27
Max output (As rated by the engine manufacturer)	6.5 kW / 9 hp
Cylinders	1
Number of strokes	4-stroke engine
Cylinder displacement	265.47 cm ³ / 16.2 cu.inch
Cylinder bore	73.66 mm / 2.9 inch
Cylinder stroke	58.42 mm / 2.3 inch
Fuel tank volume	6.02 lit / 1.59 gal.
Starter	Electric
Engine cooling	Air
Number of belts	2
Displacement, l	265 lit
Oil capacity, l	1 lit
Output RPM	3600 rpm
Diamond blade, max	254 mm / 10 "
Max cutting depth	38 mm / 1.5 inch
Blade depth control	Manual
Blade control	Manual
Blade shaft diameter	31.75 mm / 1.25 inch
Blade flange	107.95 mm / 4.25 "
Blade shaft RPM	3600 rpm
Axle front	25.4 mm / 1 inch
Rear axle diameter	25.4 mm / 1 inch
Handle bars	Fixed
Primary wheel size	Outside diameter: 101.6 Wheel width: 101.6 Inner bore: 0 mm / Outside diameter: 4 Wheel width: 4 Inner bore: 0 "
Secondary wheel size	Outside diameter: 254 Wheel width: 92.07 Inner bore: 0 mm / Outside diameter: 10 Wheel width: 3.625 Inner bore: 0 "
Weight	143.79 kg / 317 lbs
Weight incl. packaging	176 kg / 388 lbs
Product size, LxVxH	1778x647.7x1016 mm / 94x29x34 inch

