



From the most routine garden tasks the BX-Series has you covered for

From mowing the lawn to a complete landscaping makeover, nothing beats Kubota BX tractors for getting the job done. Introduced in 1999, Kubota BX sub-compact tractors have been a market leader. They have the power and versatility for digging, hauling, plowing, and all the other tasks around the yard. Moreover, their compact size

makes them easy to handle and store. Comfort and operability—hallmarks of the BX-Series—have been enhanced to reduce operator fatigue and increase operator satisfaction. The BX25D is equipped with backhoe and front loader as standard equipment, making it the versatile choice for those special tasks.



BX25D

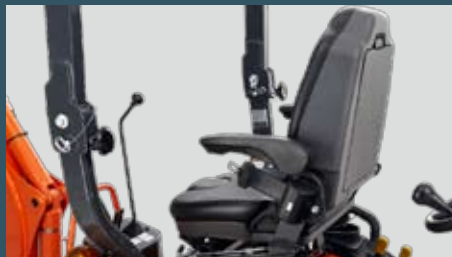
**Loading, mowing, back-hoeing—
whatever the job, the BX25D is ready**

Straight out of the box, the BX25D is ready to go to work on any job you have. That's because it comes with a backhoe and front loader as standard equipment. Kubota's unique Quick Hitch makes short work of attaching these and other implements, including the optional pallet fork and snow blade. The BX25D also has a specially reinforced frame that provides the durability, stability, and strength you need for heavy-duty implement work.



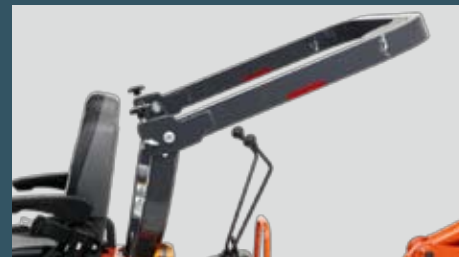
FRONT GUARD

A sturdy and distinctive front grill guard protects the front end and matches the tractor's sleek, rounded look.



REVERSIBLE SEAT

When its time to switch from loading to back-hoeing, simply lift the reversible seat and swivel it to the back. The seat also can be adjusted forward and back for optimum operator comfort.



FOLDABLE ROPS

The BX25D's Rollover Protective Structure (ROPS) quickly folds without tools, letting the BX25D easily pass under low obstructions. It also makes storage in a garage or shed a snap.

(Note: Kubota recommends that the ROPS be in the up position during most operations.)

FRONT IMPLEMENT 4-POSITION CONTROL VALVE

Also standard on the BX25D, Kubota's front 4-position valve lets you quickly and easily attach the front loader and other front-mounted implements. The valve is tucked out of the way to maintain the BX25D's clean and sleek look.

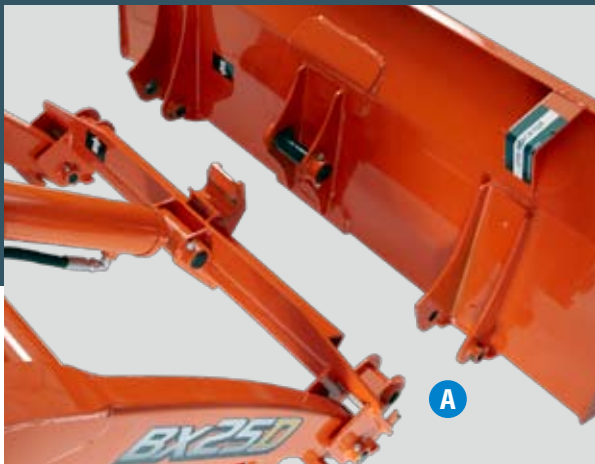


A. KUBOTA ORIGINAL QUICK HITCH (Optional)

Front and rear implements are a snap to attach and remove, thanks to Kubota's unique Quick Hitch system.

B. FRONT LOADER ATTACHMENTS (Optional)

Optional loader attachments include pallet fork and front blade, giving the BX25D even greater versatility.



PALLET FORK (Optional)



SNOW BLADE (Optional)

A compact backhoe that's big on comfort and performance

Boosting a purpose-built, spacious, comfortable operator station, the BX25D is designed for serious digging. The backhoe itself features a curved boom, ample legroom, 20° angle of departure, superior protection for the hydraulic hoses, an easy attach/detach system and wide sight lines. It's the perfect tool for everyday tasks as well as tough jobs.

CURVED BOOM

A curved boom not only allows you to dig deeper, it keeps the boom from contacting the edges of the excavation area. It also increases the lifting height.

A. BOOM AND SWING CYLINDER CUSHION VALVES

Standard on the BX25D, an integrated cushion valve ensures smooth movement both horizontally and vertically, minimizing the shock that's transmitted to the operator when the backhoe arm hits its range limits.



WIDE VIEW

Tucking the hydraulic hoses inside the backhoe boom provides two great benefits—protection for the hoses and greater visibility for the operator.



MECHANICAL THUMB (Optional)

A positionable mechanical thumb gives the BX25D the ability to grasp and move logs, landscaping materials, and other items with ease, greatly expanding the types of jobs you can do around your property.

EASY IMPLEMENT ATTACHMENT/DETACHMENT

4-point mounting systems at both the front and back of the BX25D simplify attaching and detaching the backhoe, front loader, and other implements. No tools required!



BX25 photo shown



20° ANGLE OF DEPARTURE

Steep inclines pose no problem for the BX25D, thanks to its 20° angle of departure. It also means the tractor can be loaded onto trailers with the backhoe mounted.



PROTECTED HOSES

Tucking the hydraulic hoses inside the backhoe boom helps protect them from damage and the elements, thereby increasing their service life.



LEVER BOOTS

Boots on the bottom parts of the levers help protect the mechanisms from the elements as well as ensure smoother operation and a longer service life.



MORE LEGROOM

Wide steps on each side of the boom controls provide more room—and comfort—for the legs and feet.

Specifications

Model			BX1870	BX2370	BX2670	BX25D		
Engine			Liquid-cooled, 3-cylinder diesel					
Type								
Model			Kubota D722	Kubota D902	Kubota D1005	Kubota D902		
Engine gross HP at 3200 rpm*		HP (kW)	18.0 (13.4)	23.0 (17.2)	25.5 (19.0)	23.0 (17.2)		
PTO horsepower at 3200 rpm		HP (kW)	13.7 (10.2)	17.7 (13.2)	19.5 (14.5)	17.7 (13.2)		
Displacement		cu.in. (cc)	43.9 (719)	54.8 (898)	61.1 (1001)	54.8 (898)		
Fuel tank capacity		gal. (ℓ)	6.6 (25)					
Drive train			HST, High-Low gear shift (2 forward / reverse)					
Transmission								
Drive method			2WD and 4WD selection					
Brakes			Wet disc					
PTO			Live independent, wet hydraulic clutch					
Rear			STD (540rpm)					
Mid			STD (2500rpm)					
Hydraulics			6.2 (23.5)					
Pump output		gpm (ℓ/min.)						
3-point hitch			Category I			Optional		
Lift capacity @ 24" behind pin		lbs. (kg)	680 (310)					
Steering			Hydrostatic Power Steering					
Tire size			18×8.5–10 / 18×8.5–10 / 18×8.5–10				18×8.5–10 / N.A./18×8.5–10	
Front	Turf/Bar/Industrial							16×7.5–8 / 16×7.5–8 / N.A.
Rear	Turf/Bar/Industrial		24×12–12 / 24×12–12 / N.A.	26×12–12 / 26×12–12 / 26×12–12			26×12–12 / N.A./26×12–12	
Traveling speeds at rated engine rpm (Turf)		Forward	mph (km/h)	0–7.8 (0–12.5)			0–8.4 (0–13.5)	
		Reverse	mph (km/h)	0–5.9 (0–9.5)			0–6.5 (0–10.5)	
Dimensions			92.1 (2340)				95.5 (2425)	
Length with 3-point hitch		in. (mm)						
Width (w/ turf tire)		in. (mm)	44.5 (1130)					
Height with ROPS		in. (mm)	86.2 (2190)			87.2 (2215)		
Wheelbase		in. (mm)	52.8 (1340)			55.1 (1400)		
Ground clearance (front axle)		in. (mm)	9.0 (230)			8.7 (220)		
Tread		Front	in. (mm)	34.6 (880)			36.6 (930)	
		Rear	in. (mm)	32.2 (820)				
Turning radius (w/o brake)		feet (m)	7.2 (2.2)			7.5 (2.3)		
Tractor weight		lbs. (kg)	1345 (610)			1410 (640)	1466 (665)	1587 (720)

BX25D** Backhoe Specifications

Model		BT602
Bucket cylinder digging force	lbs. (N)	1936 (8610)
Dipperstick cylinder digging force	lbs. (N)	1171 (5209)
Boom swing mechanism		One cylinder
Shipping weight (with 12" bucket)	lbs. (kg)	617 (280)
Transport height	in. (mm)	67.7 (1719)
Loading height	ft. (mm)	5' (1533)
Digging depth	ft. (mm)	6'1" (1842)
Swing pivot to rear axle center line	in. (mm)	28.6 (726)
Reach from swing pivot	ft. (mm)	8'7" (2612)
Bucket rotation	degrees	180
Swing arc	degrees	140
Angle of departure	degrees	20.1

*SAE J1995

The company reserves the right to change the above specifications without notice.

This brochure is for descriptive purposes only. Please contact your local Kubota dealer for warranty and safety information.

For your safety, Kubota strongly recommends the use of a Rollover Protective Structure (ROPS) and seat belt in almost all applications.

**The loader and backhoe come standard on the BX25D model.

BX25D** Loader Specifications

Model		LA240A
Max. lift height (to bucket pivot pin)	in. (mm)	71.3 (1810)
Dumping clearance	in. (mm)	52.4 (1330)
Dumping reach at max. lift height	in. (mm)	26.2 (665)
Maximum dump angle	degrees	45
Reach with bucket on ground	in. (mm)	54.7 (1390)
Bucket rollback angle	degrees	29
Digging depth	in. (mm)	4.7 (120)
Bucket width	in.	48
Lift capacity (500mm fwd, max. height)	lbs. (kg)	518 (235)
Lift capacity (pivot pin, max. height)	lbs. (kg)	745 (338)
Breakout force (500mm fwd)	lbs. (N)	992 (4410)
Raising time / lowering time (w/o load)	second	3.5 / 2.7
Bucket rollback time / dumping time	second	2.4 / 1.7

©2012 Kubota Corporation



KUBOTA TRACTOR CORPORATION

Kubota Tractor Corporation, 3401 Del Amo Boulevard, Torrance CA 90503
 Western Division: 1175 S. Guild Ave., Lodi, CA 95240 Tel (209) 334-9910
 Central Division: 14855 FAA Boulevard, Fort Worth, TX 76155 Tel (817) 571-0900
 Northern Division: 6300 at One Kubota Way, Groveport, OH 43125 Tel (614) 835-1100
 Southeast Division: 1025 Northbrook Parkway, Suwanee, GA 30024 Tel (770) 995-8855

Visit our web site at: www.kubota.com

